

# CBA-F27 LWD VISION RT 500MD

Format: VISION SERVICE RT 500MD

Vertical Scale: 1:500

Graphics File Created: 22-May-2009 04:04

## PIP SUMMARY

arcVISION Gamma Ray

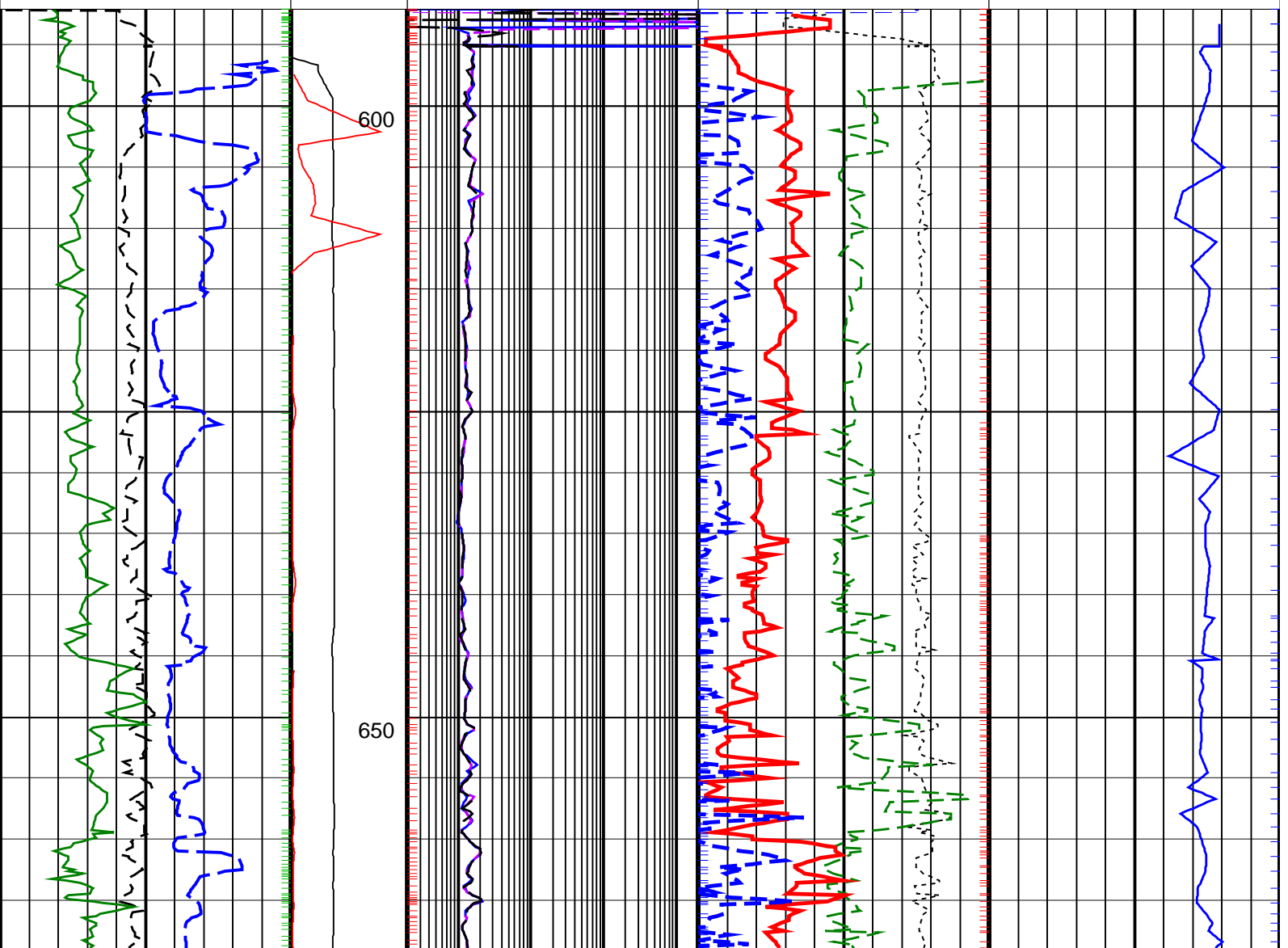
Delta-T Compressional, Real-Time

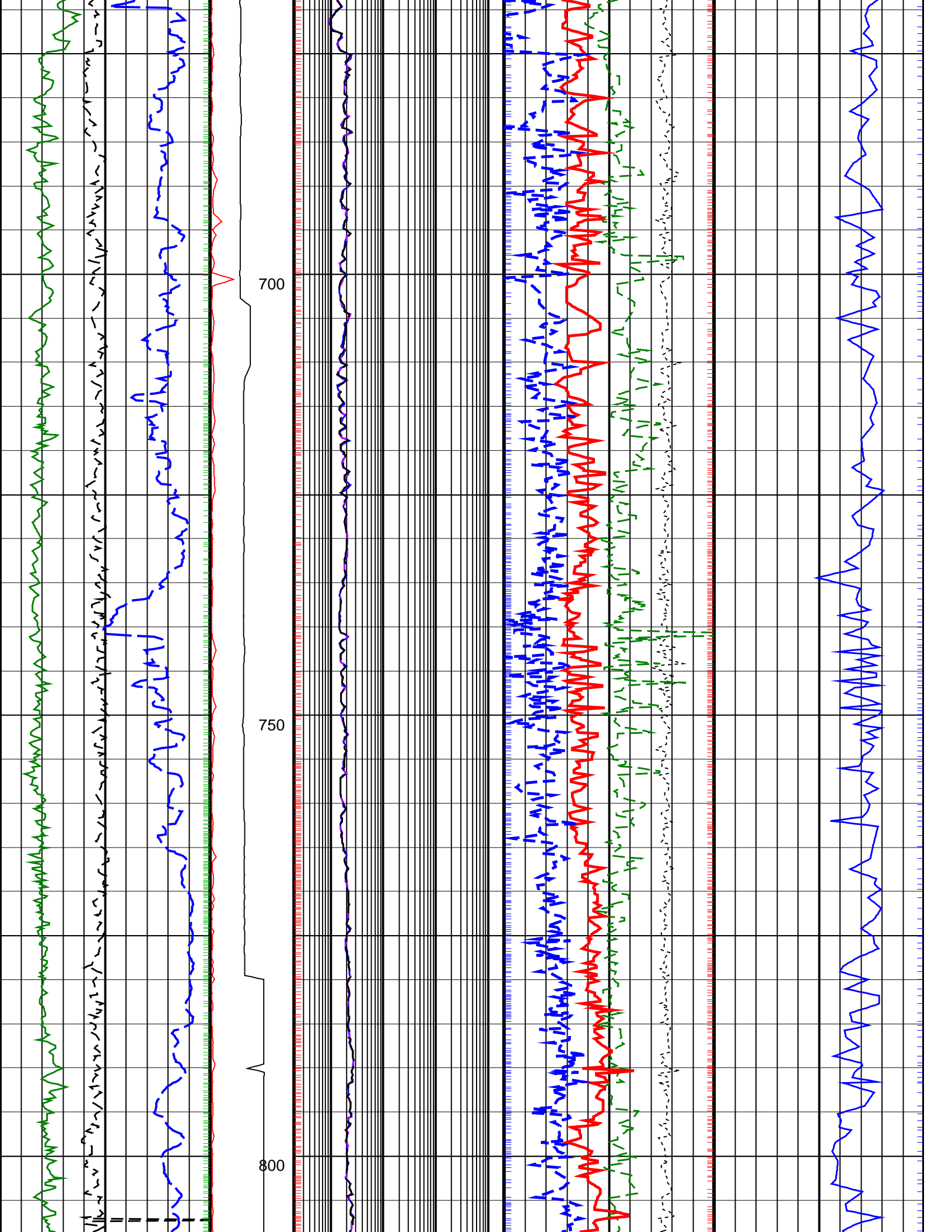
Resistivity

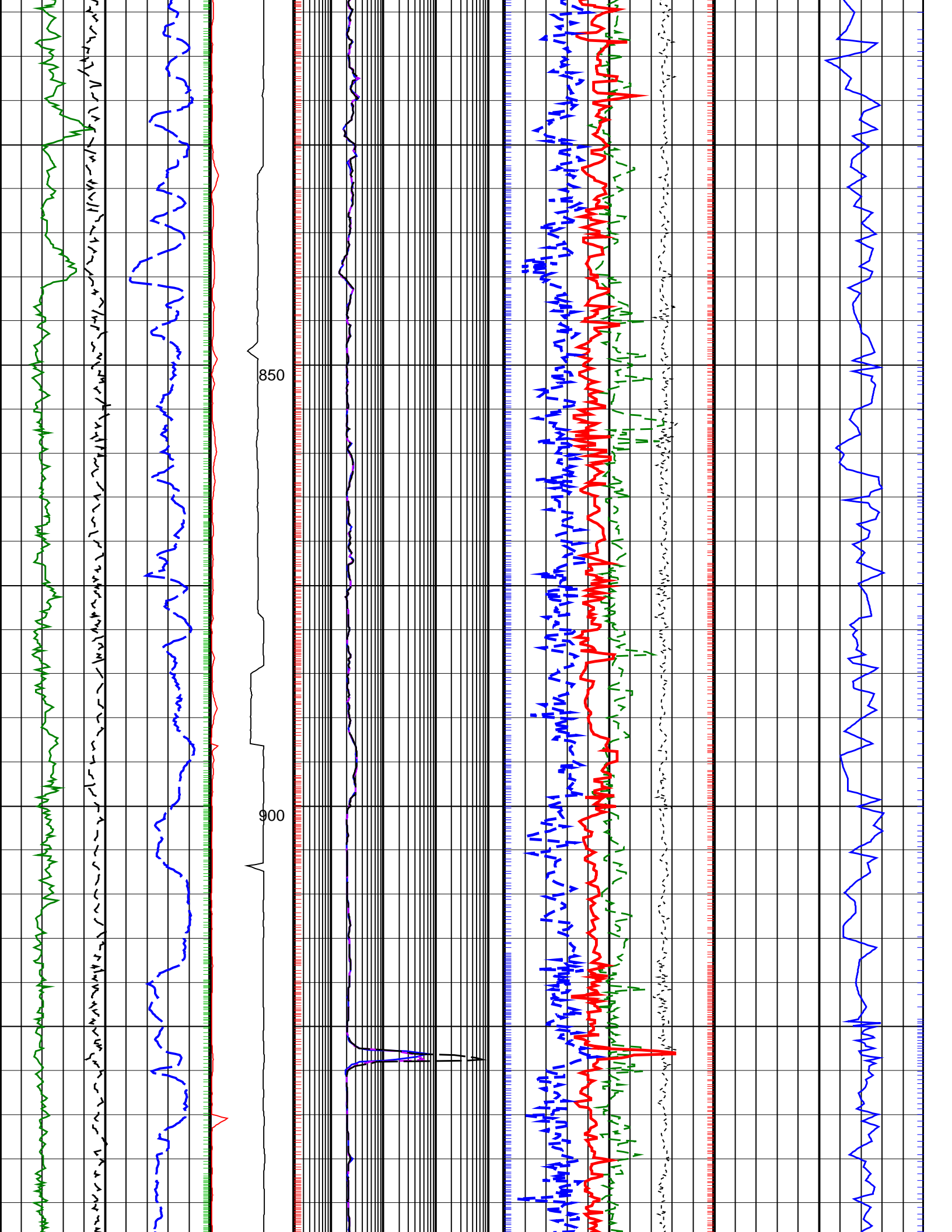
ROBB (Density Bottom)

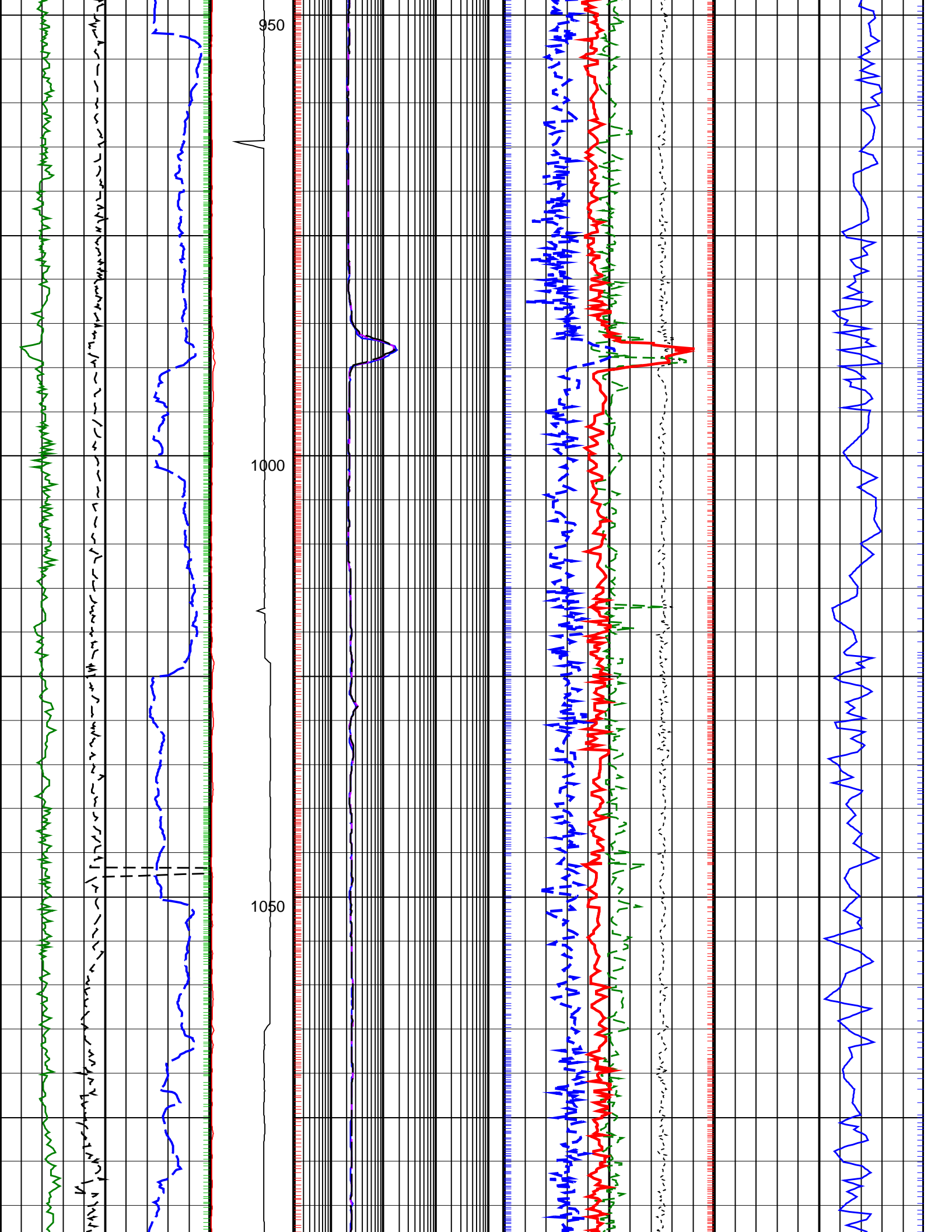
TNPH (Thermal Neutron Porosity)

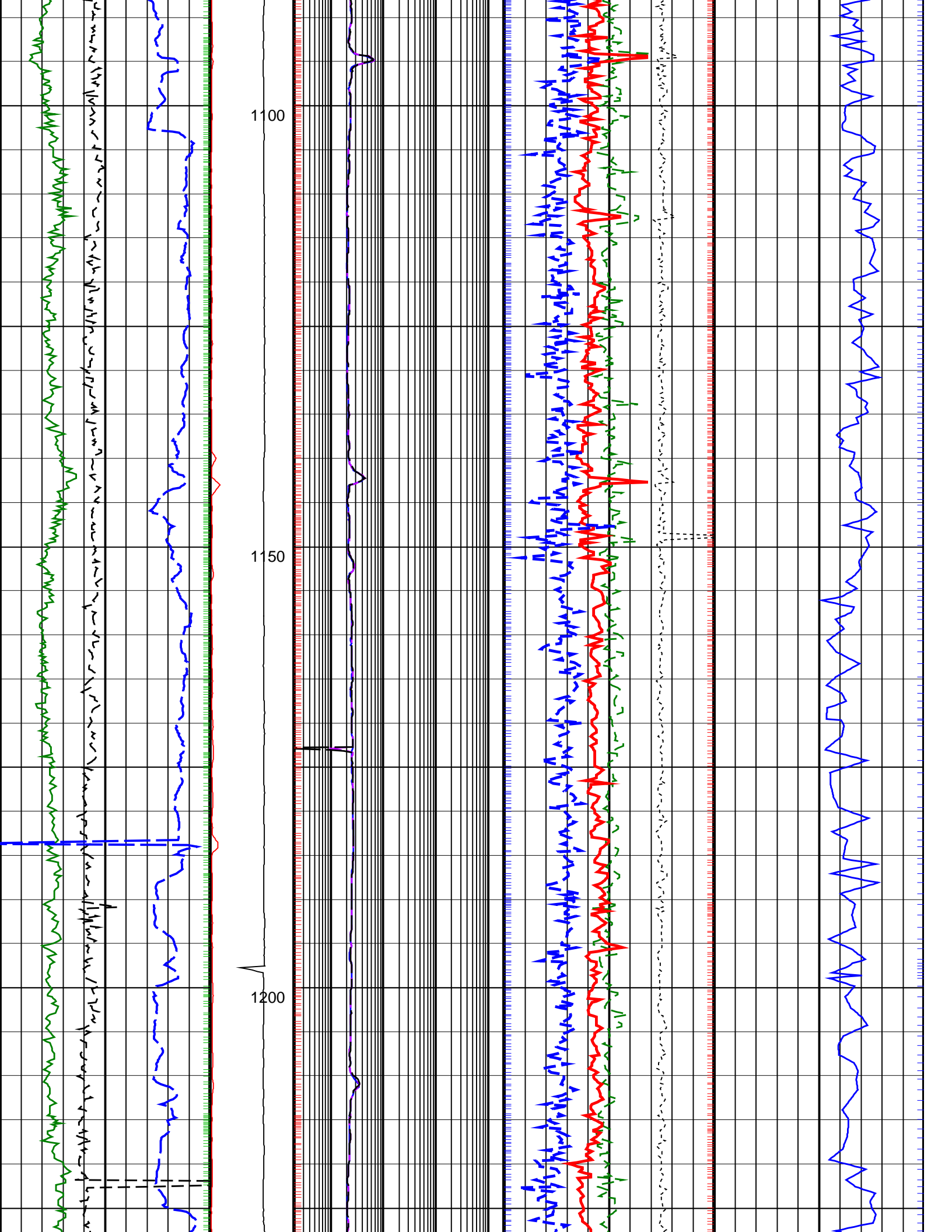
		Thermal Neutron Porosity, Real-Time (TNPH_ADN_RT) 45 (PU) -15	
ARC Gamma Ray, Real-Time (ARC_GR_RT) 0 (GAPI) 200		Bulk Density, Bottom, Real-Time Computed Downhole (ROBB_DH_RT) 1.85 (G/C3) 2.85	
Average Borehole Diameter, Real-Time (ADIA_ADN_RT) 6 (IN) 16		Photoelectric Factor, Bottom, Real-Time (PEB_RT) 0 (----) 10	
ROP*5 (ROP5) (M/HR) 200 0		Bulk Density Correction, Bottom, Real-Time Computed Downhole (DRHB_DH_RT) -0.75 (G/C3) 0.25	
PKPK_RPM (Stick_RT) (RPM) 0 500		Delta-T Compressional, Real-Time (DTCO_RT) (US/M) 600 100	
MWD Collar RPM (CRPM_RT) (RPM) 0 250		ARC BHCORR Phase-Shift Resistivity 40-in. at 2 MHz, Real-Time (P40H_RT) (OHMM) 0.2 2000	
ARC BHCORR Phase-Shift Resistivity 28-in. at 2 MHz, Real-Time (P28H_RT) (OHMM) 0.2 2000		ARC BHCORR Phase-Shift Resistivity 16-in. at 2 MHz, Real-Time (P16H_RT) (OHMM) 0.2 2000	

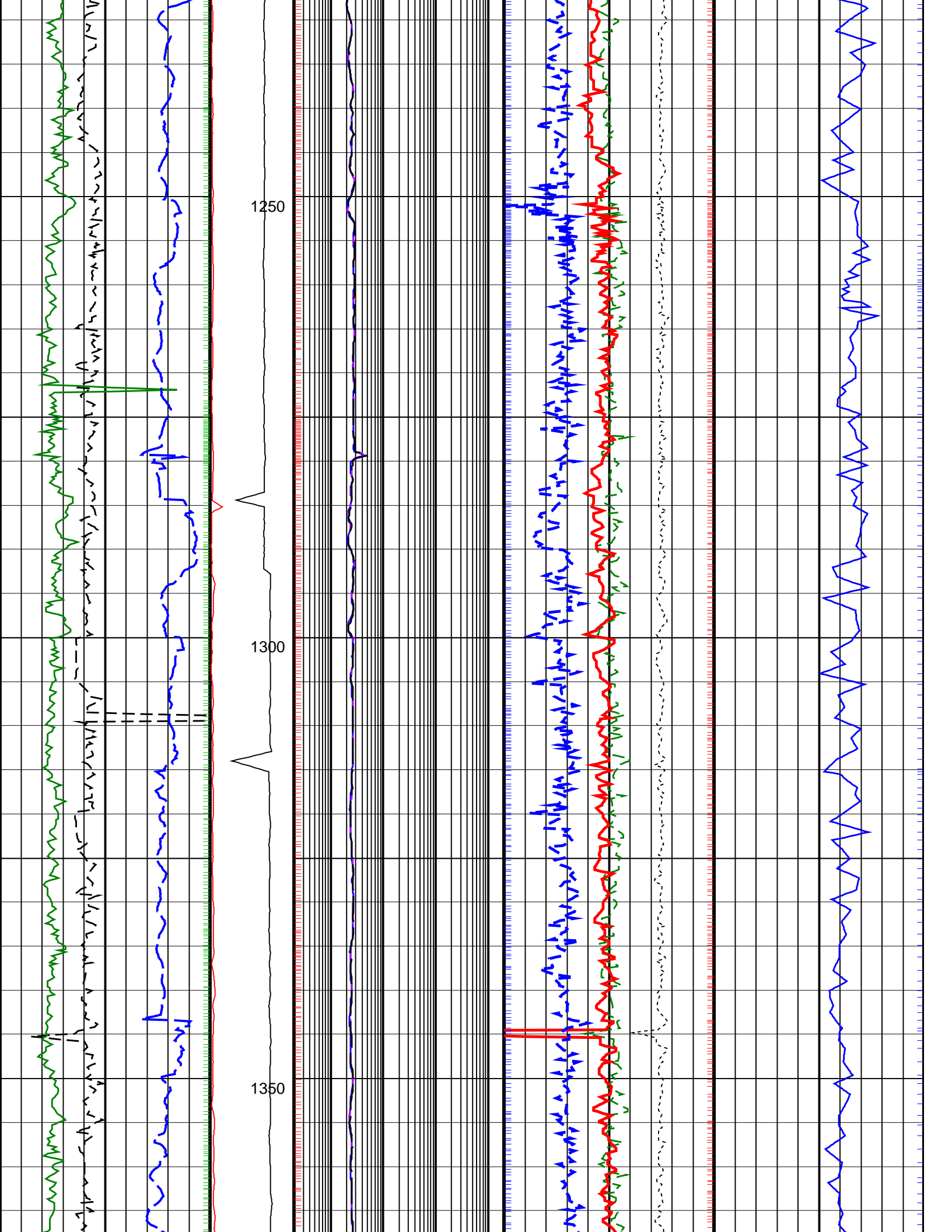


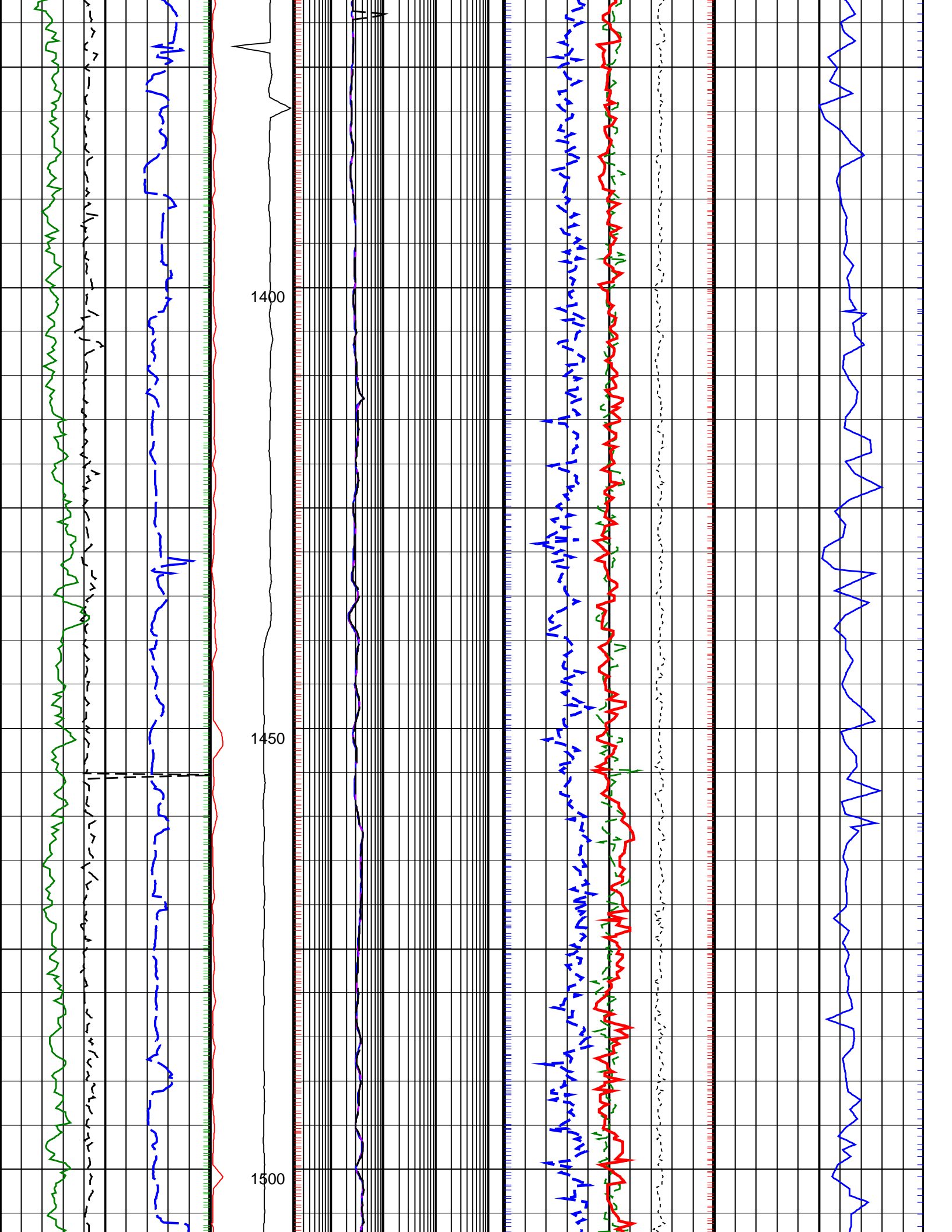


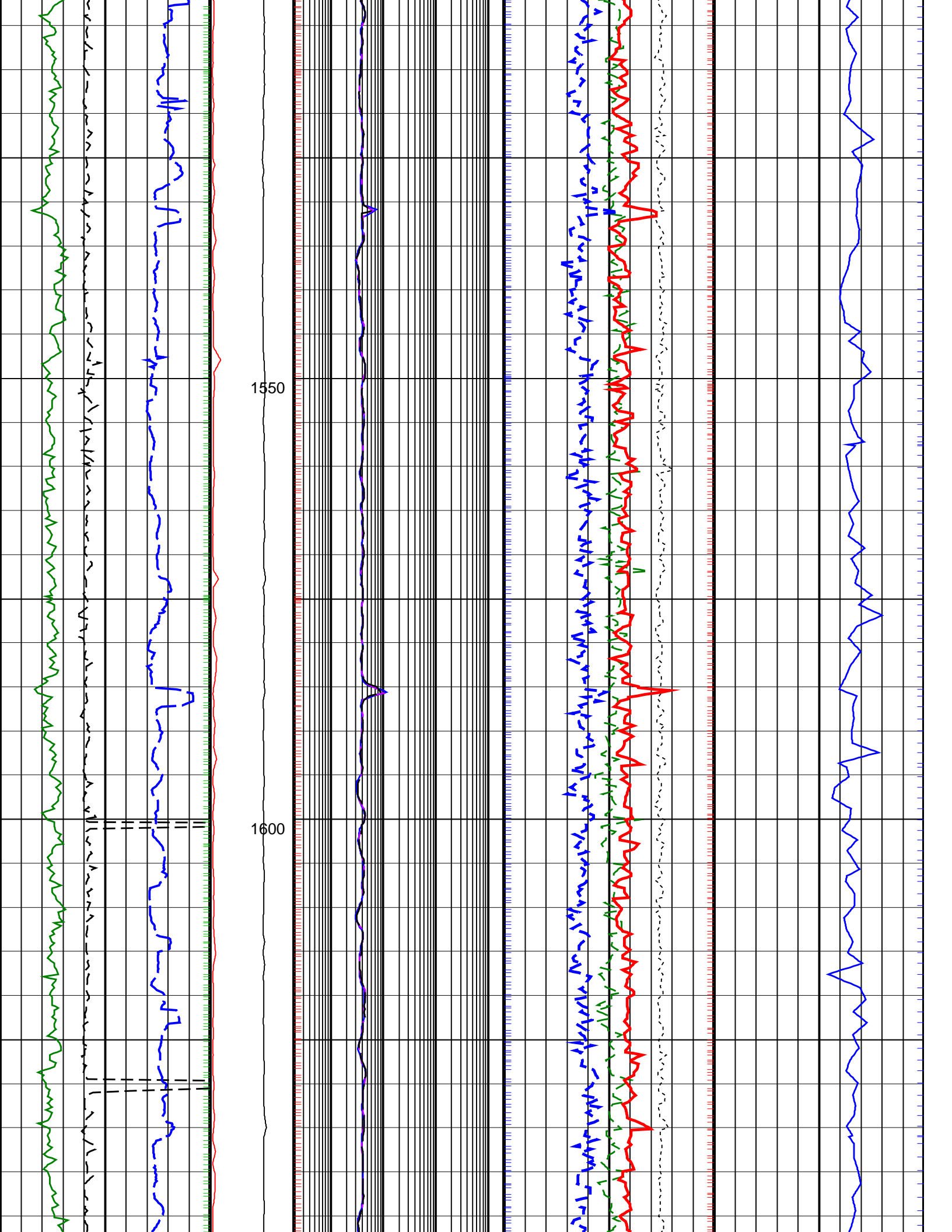




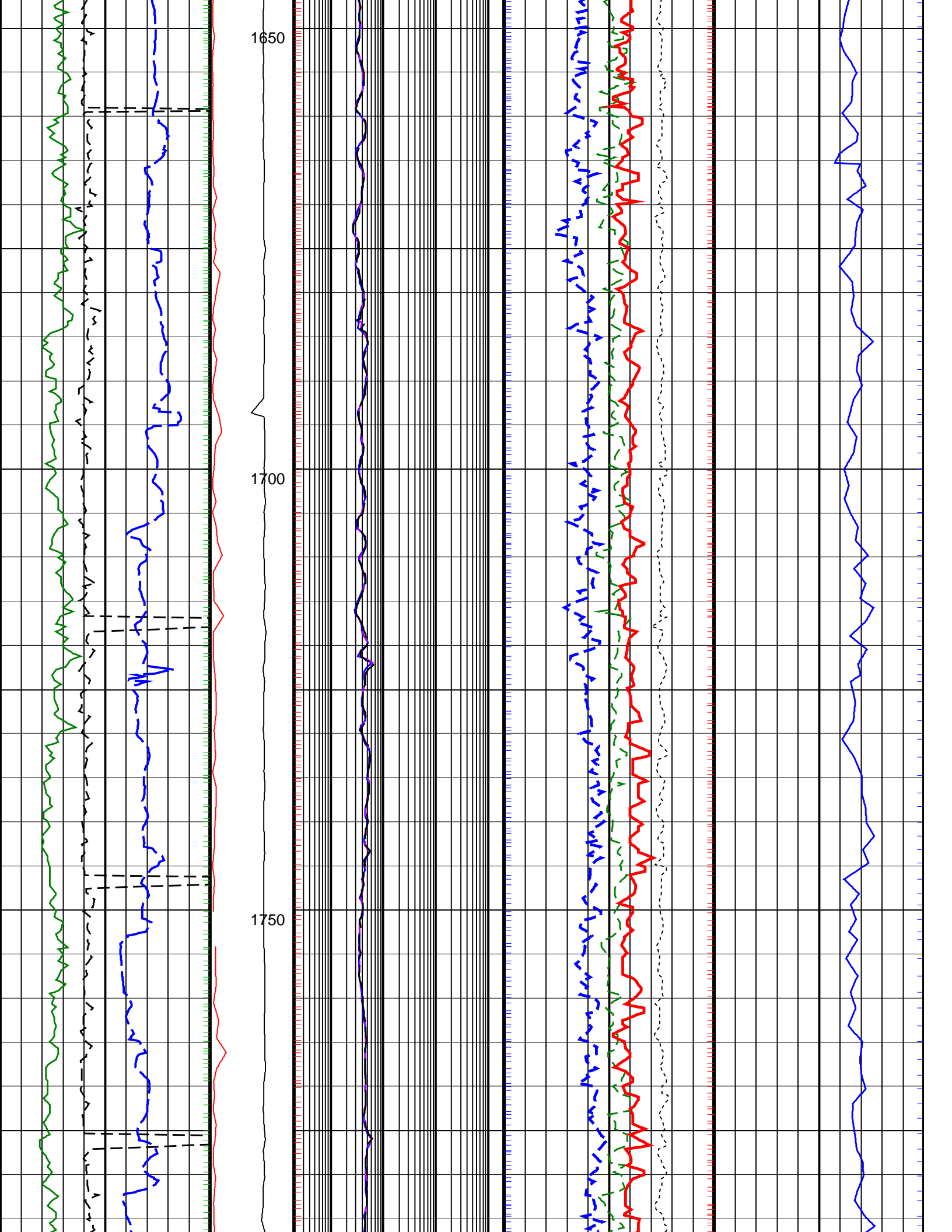


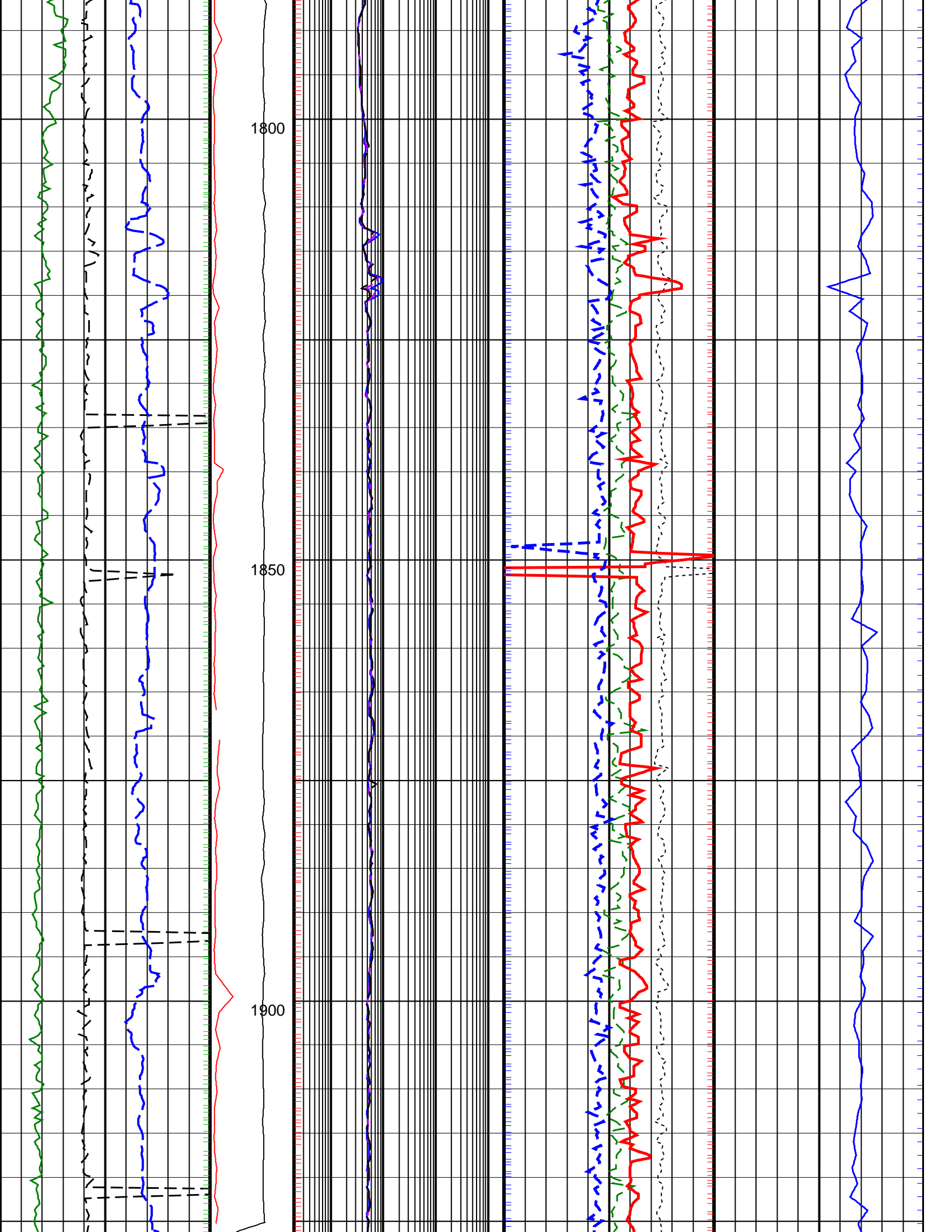


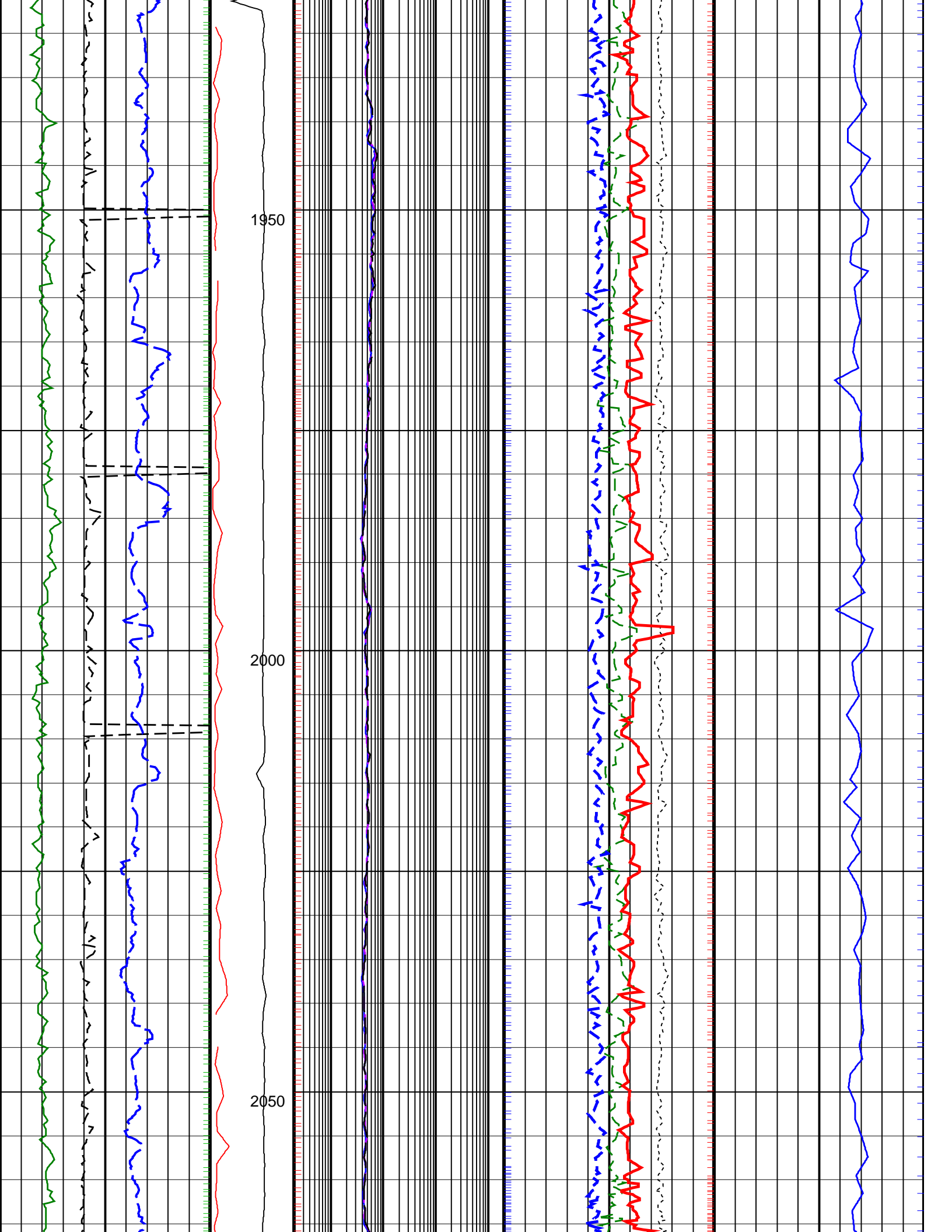


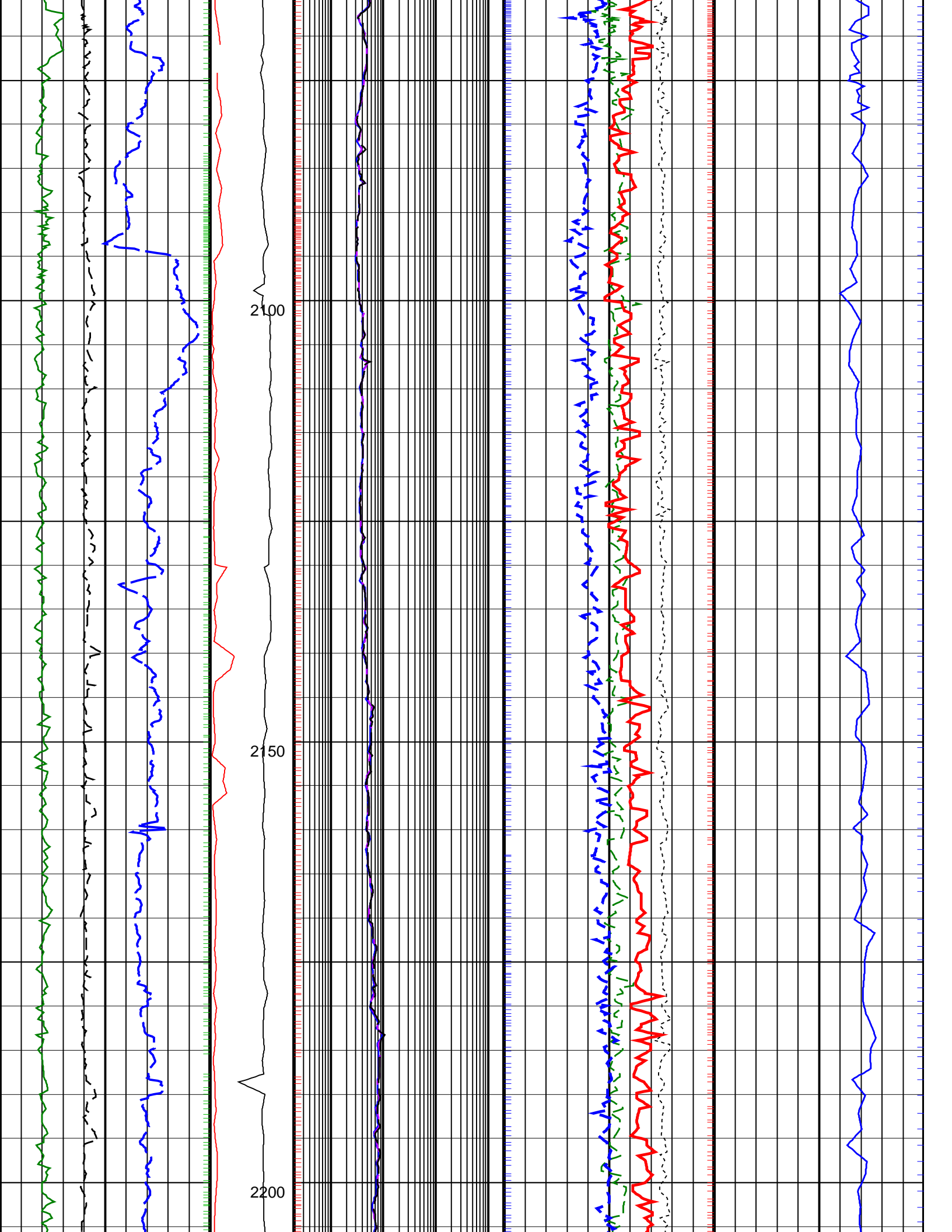


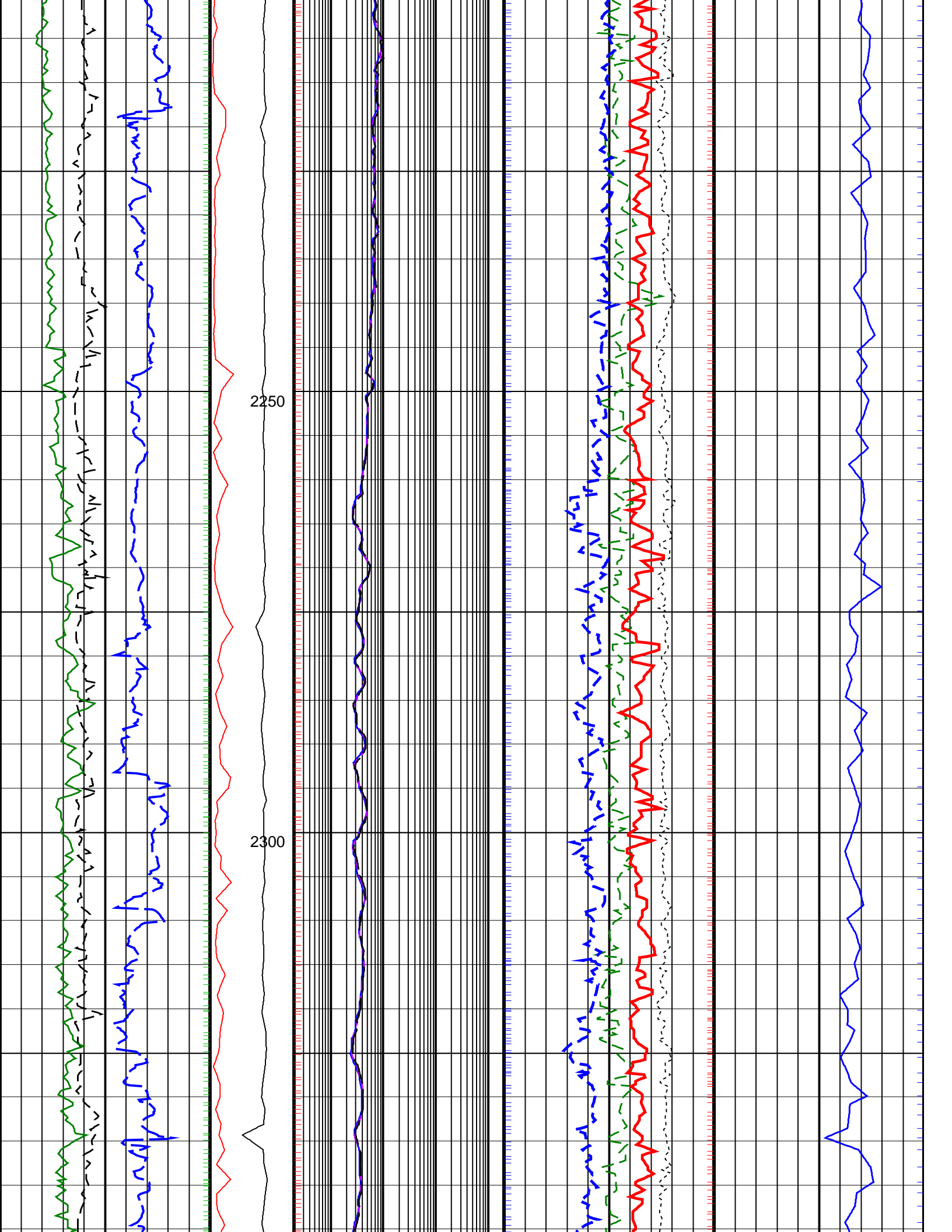


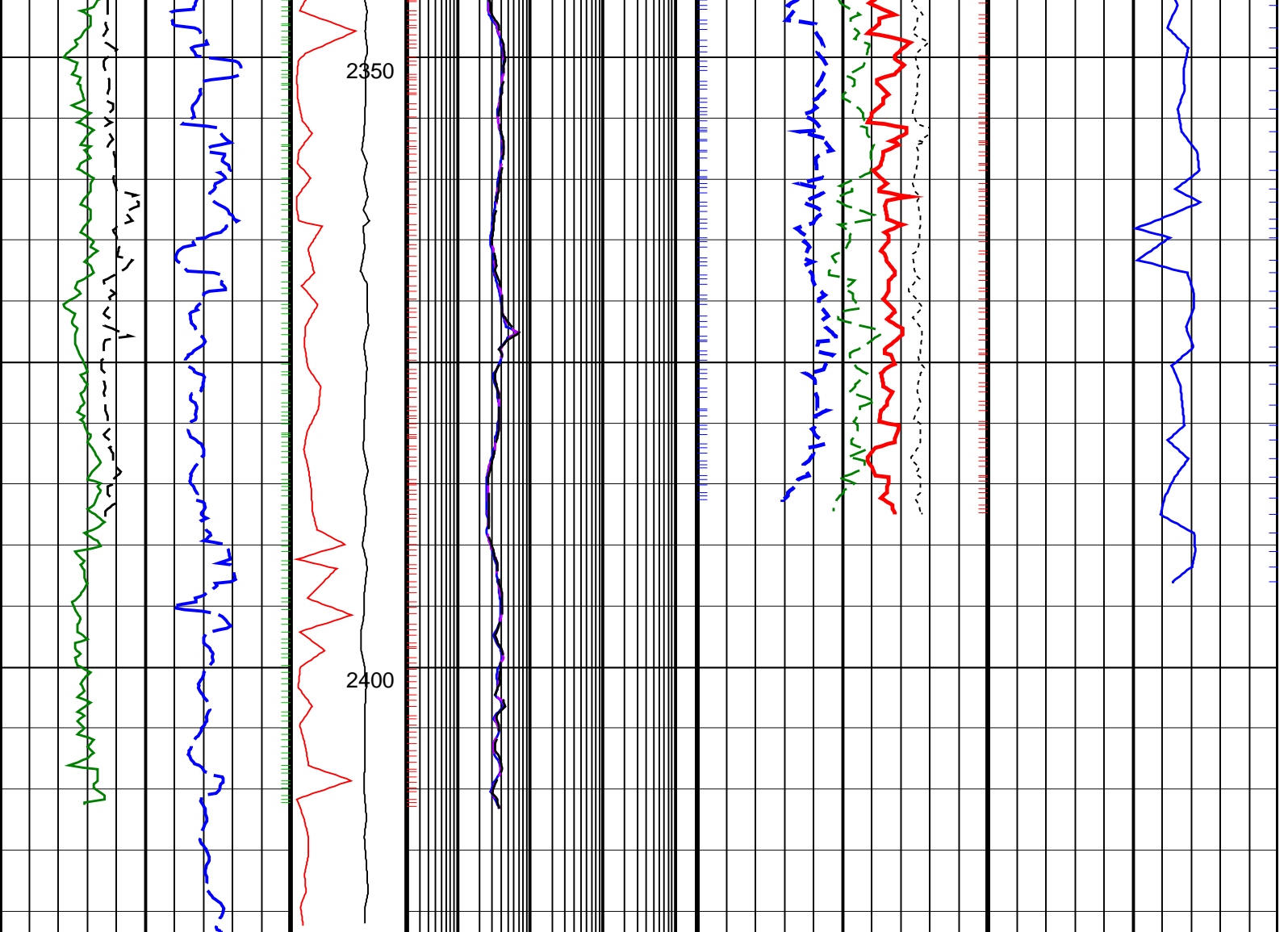












<u>ROP*5 (ROP5)</u> 200 (M/HR) 0	<b>PKPK_RPM (Stick_RT) (RPM)</b> 0 500	<b>ARC BHCORR Phase-Shift Resistivity 16-in. at 2 MHz, Real-Time (P16H_RT) (OHMM)</b> 0.2 2000	<b>Bulk Density Correction, Bottom, Real-Time Computed Downhole (DRHB_DH_RT) (G/C3)</b> -0.75 0.25	<b>Delta-T Compressional, Real-Time (DTCO_RT) (US/M)</b> 600 100
Average Borehole Diameter, Real-Time (ADIA_ADN_RT) (IN) 6 16	<b>MWD Collar RPM (CRPM_RT) (RPM)</b> 0 250	<b>ARC BHCORR Phase-Shift Resistivity 28-in. at 2 MHz, Real-Time (P28H_RT) (OHMM)</b> 0.2 2000	<b>Photoelectric Factor, Bottom, Real-Time (PEB_RT)</b> 0 10	
<b>ARC Gamma Ray, Real-Time (ARC_GR_RT) (GAPI)</b> 0 200		<b>ARC BHCORR Phase-Shift Resistivity 40-in. at 2 MHz, Real-Time (P40H_RT) (OHMM)</b> 0.2 2000	<b>Bulk Density, Bottom, Real-Time Computed Downhole (ROBB_DH_RT) (G/C3)</b> 1.85 2.85	
			<b>Thermal Neutron Porosity, Real-Time (TNPH_ADN_RT) (PU)</b> 45 -15	

PIP SUMMARY

+ arcVISION Gamma Ray

+ Resistivity

TNPH (Thermal Neutron Porosity) +

Delta-T Compressional, Real-Time +

ROBB (Density Bottom) +